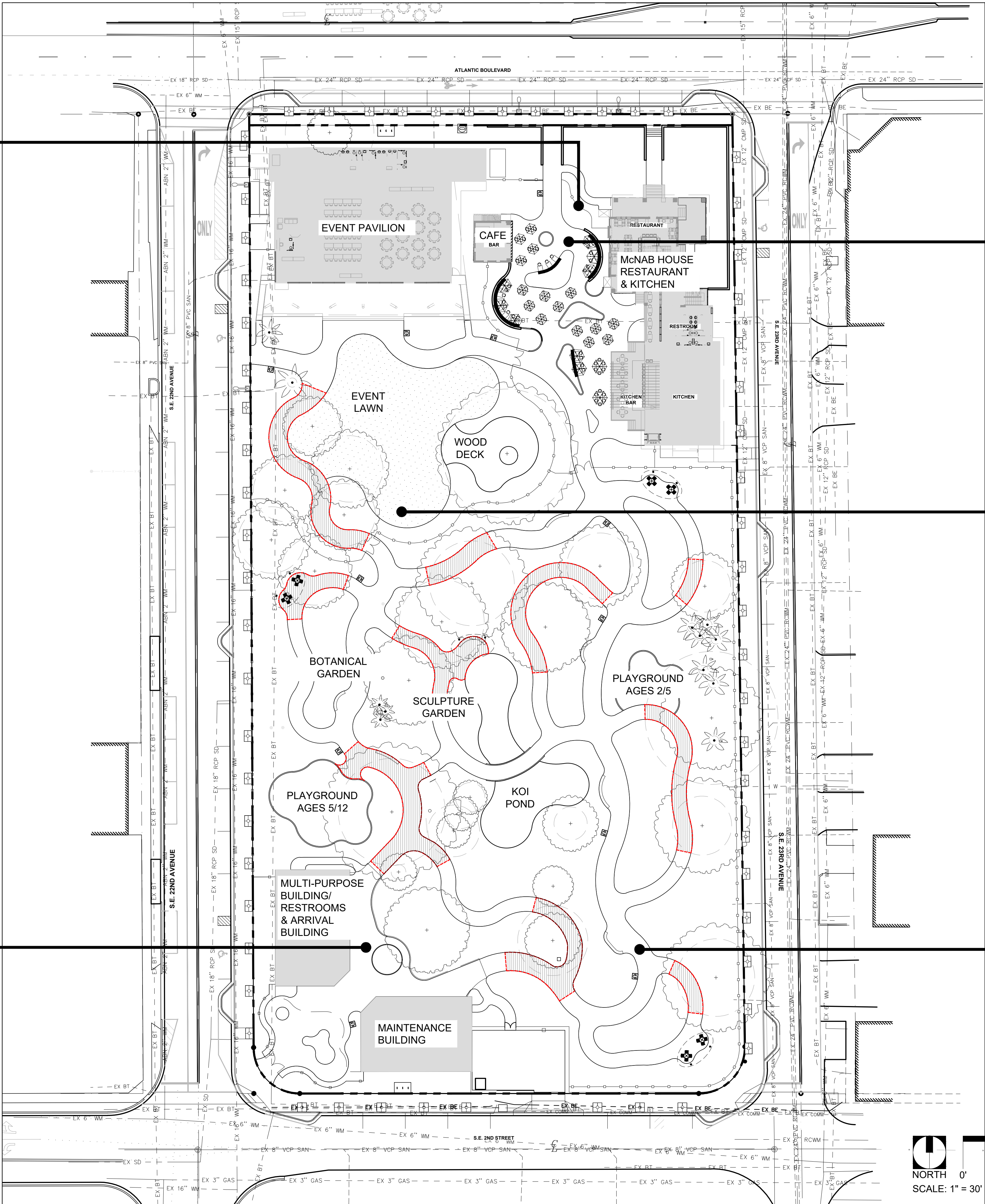


**CPTED PRINCIPLE No.3 TERRITORIAL REINFORCEMENT**  
THE PROPOSED PICKET FENCING AROUND PROPERTY LINES PROVIDES A SENSE OF SECURITY AND ENCOURAGES USERS TO ACCESS THE SITE FROM PROVIDED ACCESS GATES AND DEVELOP A SENSE OF OWNERSHIP.



**CPTED PRINCIPLE No.5 ACTIVITY SUPPORT**  
ADDITIONAL LANDSCAPE ELEMENTS LIKE BENCHES AND CANOPY TREES WILL INVITE PEOPLE TO LEISURE IN THE BOTANICAL GARDEN INCREASING PASSIVE OBSERVATION AND DECREASING THE RISK OF UNDESIRABLE ACTIVITIES. THIS INTENDED PASSIVE OBSERVATION IS TO BE IN ADDITION TO EVENT ACTIVITIES AND PROGRAMING.



**CPTED PRINCIPLE No.2 NATURAL ACCESS CONTROL**  
PROPOSED WALKWAYS AND SIDEWALKS WILL CONNECT THE EXISTING BUILDINGS WITH ALL AREAS OF THE BOTANICAL GARDEN. THIS WILL PROVIDE CLEAR OPEN-ACCESS TO SIDEWALKS. LANDSCAPE ALONG THE WALKWAYS WILL CLEARLY GUIDE PEDESTRIANS TO AND FROM ALL ELEMENTS OF THE GARDEN.



**CPTED PRINCIPLE No.1 NATURAL SURVEILLANCE**  
PROPOSED TREES HAVE A 8' MINIMUM CLEAR TRUNK ALLOWING PEDESTRIANS TO HAVE UNOBSTRUCTED VIEWS IN AND OUT OF THE PARK. CLEAR VISIBILITY IS FURTHER STRENGTHENED BY SHRUB USE. REFER TO PLANT LIST.



**CPTED PRINCIPLE No.4 MAINTENANCE**  
THE SELECTED HARDSCAPE MATERIALS ARE EASY TO MAINTAIN BY MAINTENANCE STAFF. THE FACILITY IS EXPECTED TO BE MANNED FULL TIME DURING OPERATING HOURS ALONG WITH THE USE OF THE CITY'S CCTV NETWORK.